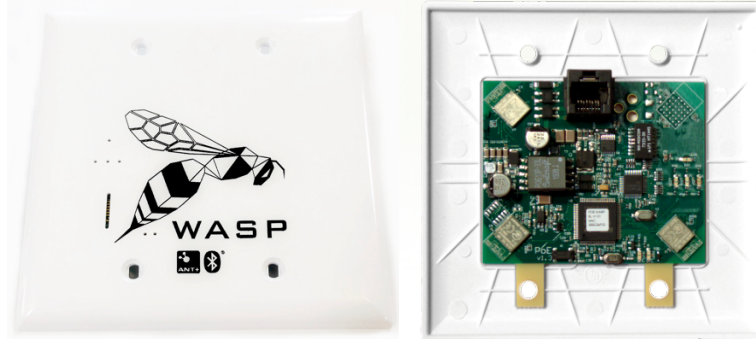


North Pole Engineering, Inc.

# WASP-PoE ANT+Ethernet Solution



## Product Overview

The North Pole Engineering **WASP-PoE** bridges Bluetooth® Smart (formally Bluetooth Low Energy or BLE) and/or ANT+ device messages directly onto a wired Ethernet network. **WASP-PoE** receives data from connected BLE/ANT+ devices and forwards the data to end points on the local Ethernet network. **WASP-PoE** is powered directly from the Ethernet connection through a PoE-enabled router or through an optional PoE-injector.

Integrating one, two or three 8-channel BLE/ANT+ radios with Ethernet circuitry, **WASP-PoE** provides a data gateway for monitoring, recording and analyzing BLE/ANT+ data in designated network locations with lower overhead than the standalone **WASP-B or N**. For example BLE/ANT+ activity monitors, weight scales, pulse-oximeters, and blood glucose monitors are all able to use this bridge module to communicate to central monitoring stations via the Ethernet network.

NPE supplies an Application Programmers Interface (API) for the **WASP-PoE**, **WASP-N** and **WASP-B** bridges that provides Application programmers one development interface for these devices. APIs are available for .NET, Apple iOS and Apple MacOS operating systems.

**WASP-PoE** is ideal for use in a wired Ethernet facility to provide complete coverage of BLE/ANT+ sensor data coming from groups of people or groups of devices. Portions of data initially captured by one node can continue to be captured through other nodes as the individual moves throughout the facility thus creating a smart, real-time monitoring solution.

## Features

- + Auto Selecting 10/100 Ethernet Port & Support
- + Concurrent communication w/100+ sensors
- + Distributed collection and control throughout a facility
- + Bi-Directional sensor communication & control
- + WASP OEM ANT Network Key Protection
- + PoE-injector available for non-PoE networks
- + FCC/IC/CE/UL and ANT+ Certified
- + ANT/ANT+/ANT-FS/BLE compatible
- + Simultaneous traffic management from various combinations of Bluetooth Smart and ANT protocols
- + Point-to-point and multicast streaming
- + OEM Access to packet protocol and API Library
- + Mounts in a standard J-Box installation
- + 1/2/3/4 radio configuration
- + 12 month limited warranty

# WASP-PoE Specifications

2

## North Pole Engineering, Inc.

221 N. 1st St., Suite 310  
 Minneapolis, MN. 55401  
 612-305-0440

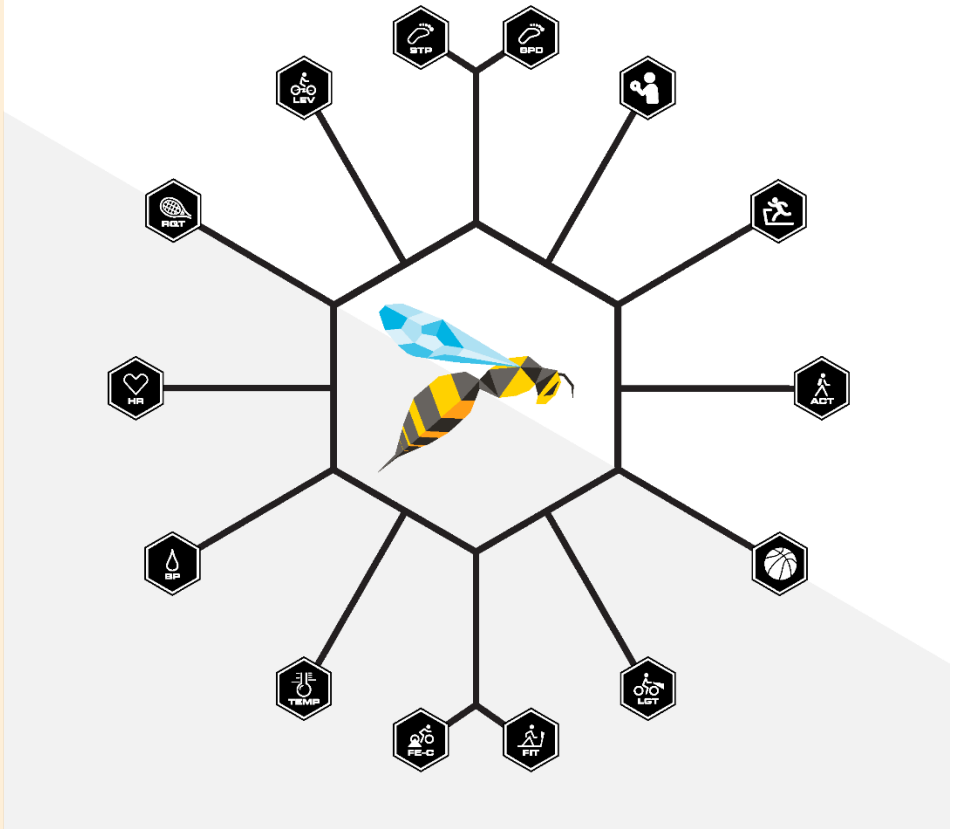
### Ordering Information

WASP-PoE is available through the following online store link:  
<http://store.npe-inc.com/categories/WASP/>

Or, contact Jim Meyer at NPE:  
[jimm@npe-inc.com](mailto:jimm@npe-inc.com)  
 612-305-0440, ext 224



Characteristic	Description
Ethernet Protocol	10/100 Ethernet
Power Source	Line powered PoE or PoE injector. Mode B
Number of Radios	1, 2, 3, 4 radio configurations
ANT+ Radio Frequency Band	2.4 Ghz ISM (2.40000-2.4835)
ANT+ Radio data rate	1 Mbps
ANT+ Radio Modulation	GFSK
Supported Network Topologies	Peer-to-peer Star Tree Practical mesh



## Target Applications

Connected Devices

Home Health

Corporate Wellness

Group Fitness/Sports

